



Israeli Hostilities on Lebanon

SITUATION REPORT #48



18 November 2024 – Till 6:00 P.M.

Note: As of this week, the report will be issued weekly, on Fridays, noting that the daily records on martyrs and injured are issued by the Ministry of Public Health through its website (<https://www.moph.gov.lb/>), and the records of Israeli aggression will be published daily by the National Council for Scientific Research (CNRS) (<https://www.cnrs.edu.lb/english/home>).

SITUATION OVERVIEW

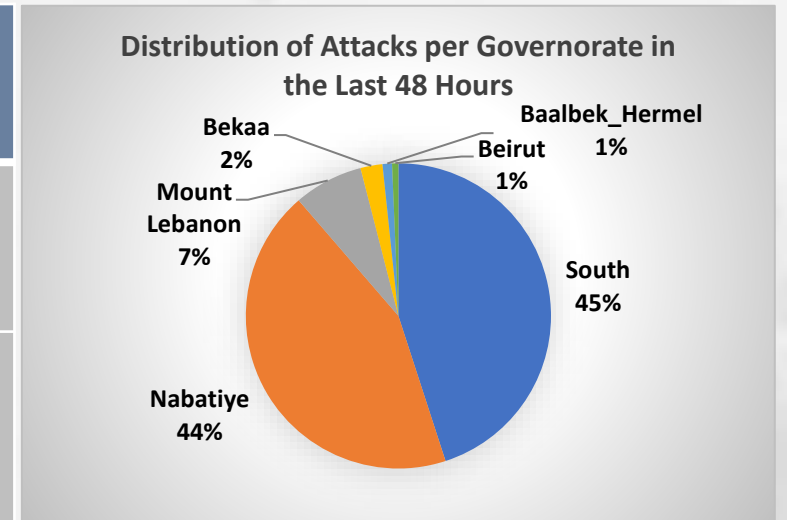
- During the last **48** hours, **300** airstrikes were recorded in various Lebanese areas, mostly concentrated in Nabatiyeh (**131** strikes) and the South (**135** strikes), bringing the total number of attacks since the beginning of the aggression to **13,522**.
- The **Ministry of Public Health** issued the toll of martyrs and injuries during the last **24** hours, where **35** martyrs and **143** wounded were recorded, bringing the total number since the start of the aggression to **3,516** martyrs and **14,929** wounded.
- To date, **1,173** accredited shelters have been opened to accommodate and receive IDPs, and the number of accredited shelters has reached a maximum capacity of **981**.
- The total number of registered IDPs in accredited shelters reached **187,992** individuals (**44,322** families), with the highest percentage of IDPs recorded in Mount Lebanon Governorate and Beirut. It is estimated that the number of IDPs is much higher.
- From September 23 to November 18, 2024, **General Security** recorded the crossing of **385,555** Syrian citizens and **225,328** Lebanese citizens into the Syrian territory.
- The **National Committee for the Coordination of Crisis Response** is working with all relevant ministries to secure additional shelters in various governorates to receive the displaced.
- **Security Agencies** are working to maintain security, contribute to assisting the displaced, distribute food and fuel, protect shelters, prevent monopolies, control prices, and monitor and control borders.
- A **Kuwaiti** military plane landed this afternoon at Rafic Hariri International Airport in Beirut as part of the air bridge set up by the State of Kuwait to relieve the Lebanese people, loaded with forty tons of humanitarian and relief aid provided by the Kuwaiti Red Crescent.
- According to the **Ministry of Agriculture**, 70% of the agricultural sector in Lebanon has been directly and indirectly affected by Israeli aggression, thousands of hectares have been completely or partially damaged, and 65,000 olive trees were destroyed due to shelling with white phosphorus.

FREQUENCY OF ATTACKS ON LEBANON IN THE PAST 48 HOURS

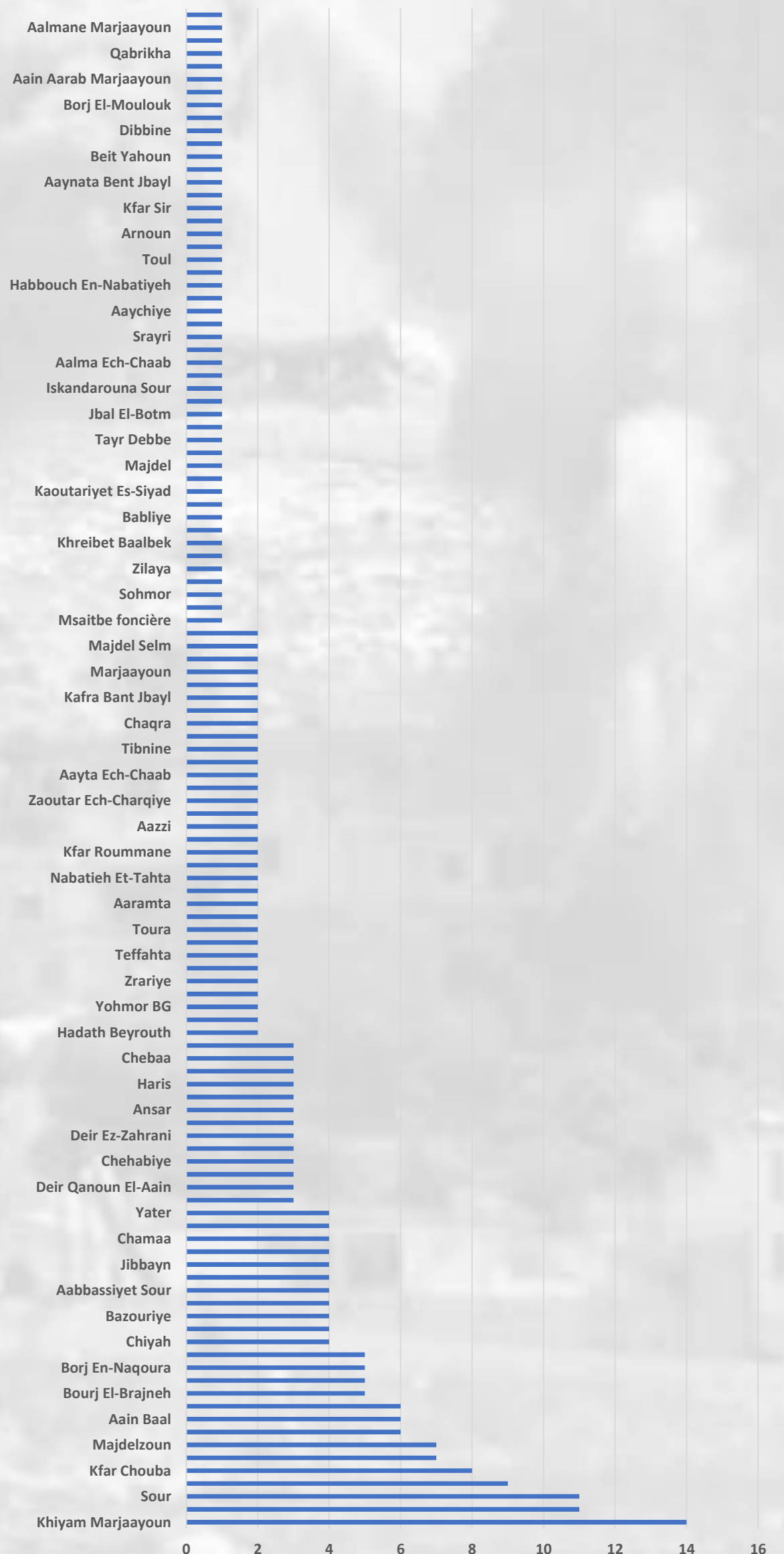
According to the daily report prepared by the National Center for Natural Hazards and Early Warning / National Council for Scientific Research on **17 and 18/11/2024**, the attacks on Lebanon are summarized as follows:



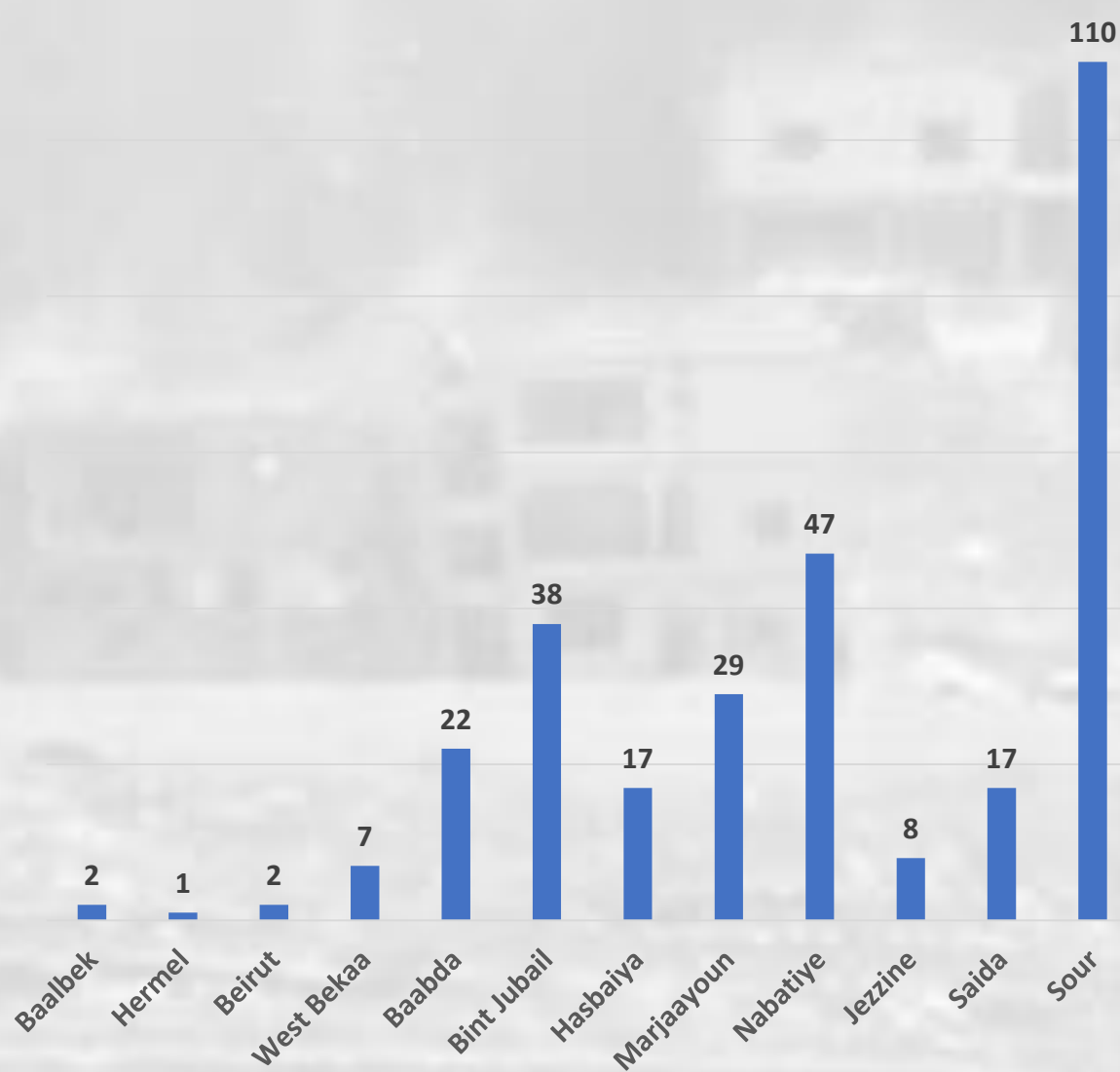
Attacks	
Cumulative	13,522
In 48 Hours	300



Number of Attacks per Cadaster in the Last 48 Hours



Number of Attacks Per District in the Last 48 Hours

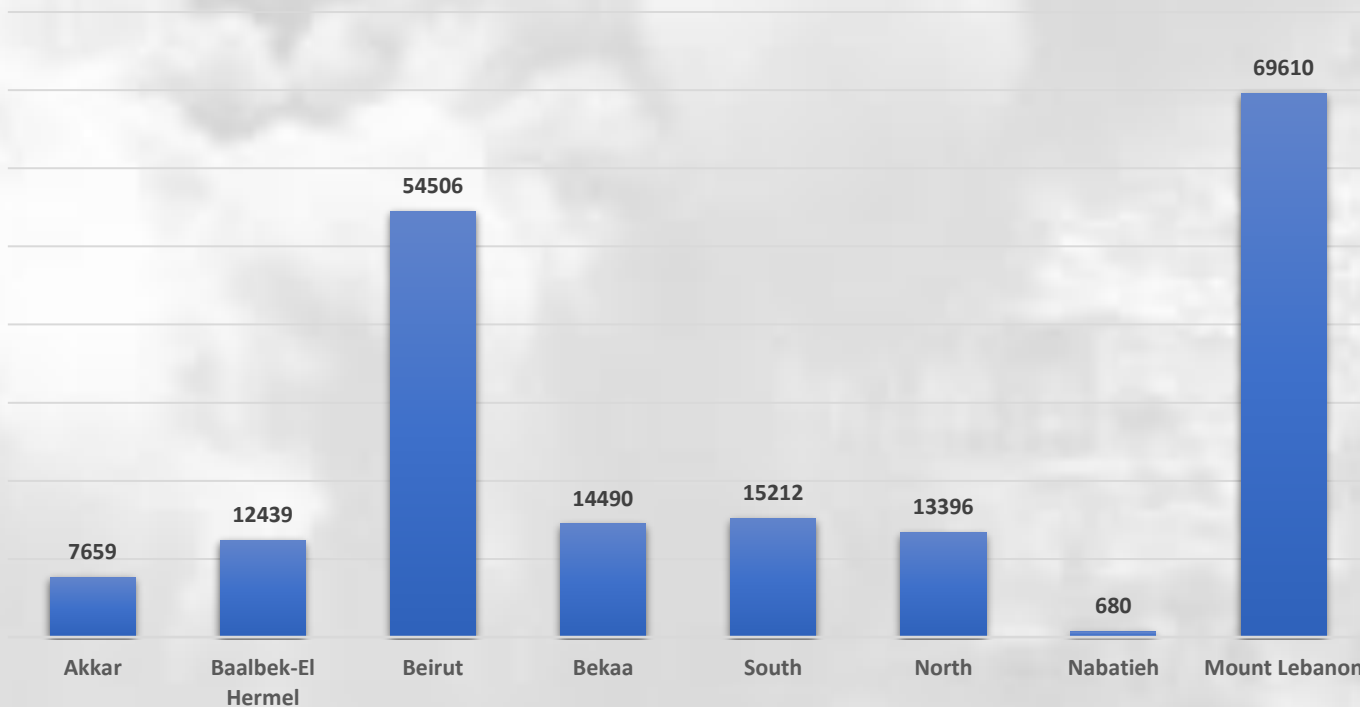


MOVEMENT OF INTERNAL DISPLACEMENT

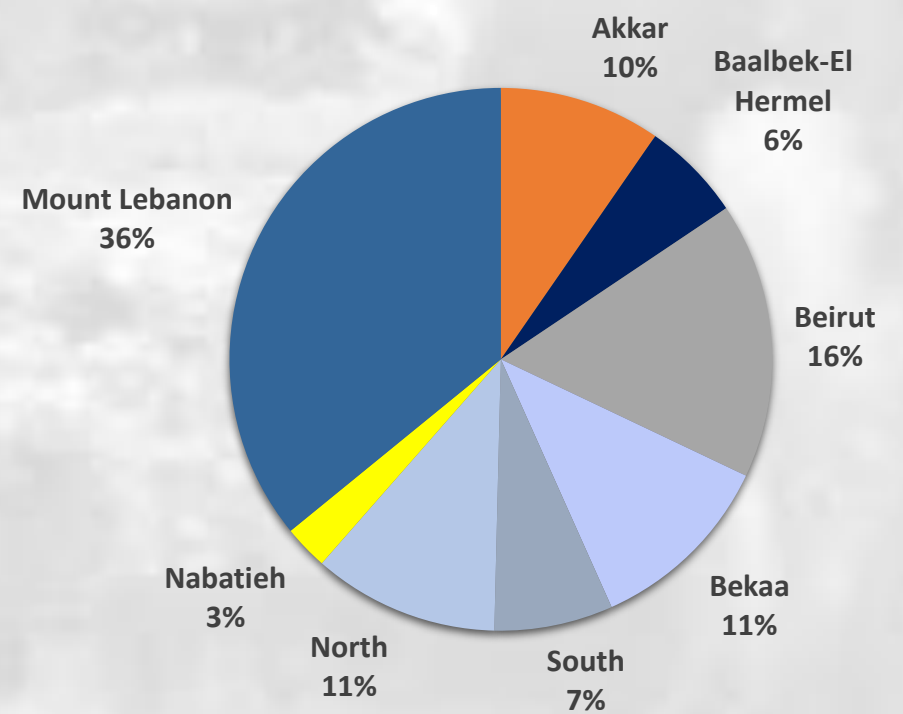
The number of IDPs registered in shelters identified by the National Operations Room has reached **187,992** IDPs so far, according to the National Platform.



Number of IDPs Per Governorate

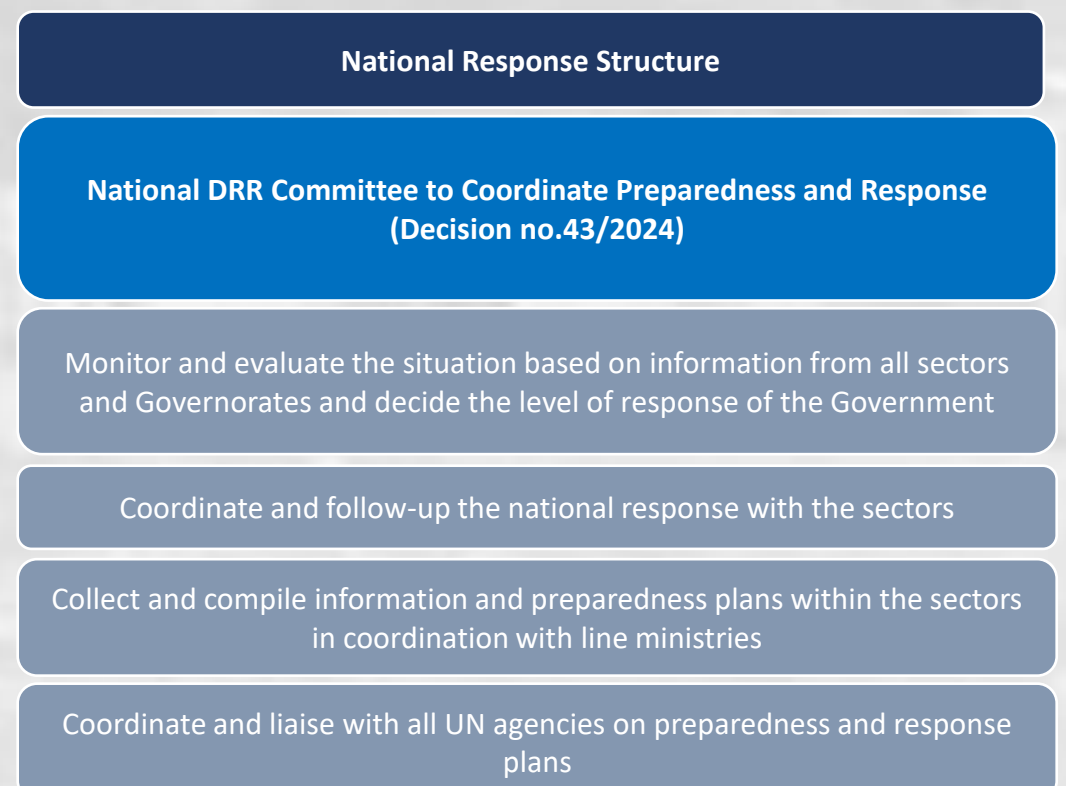
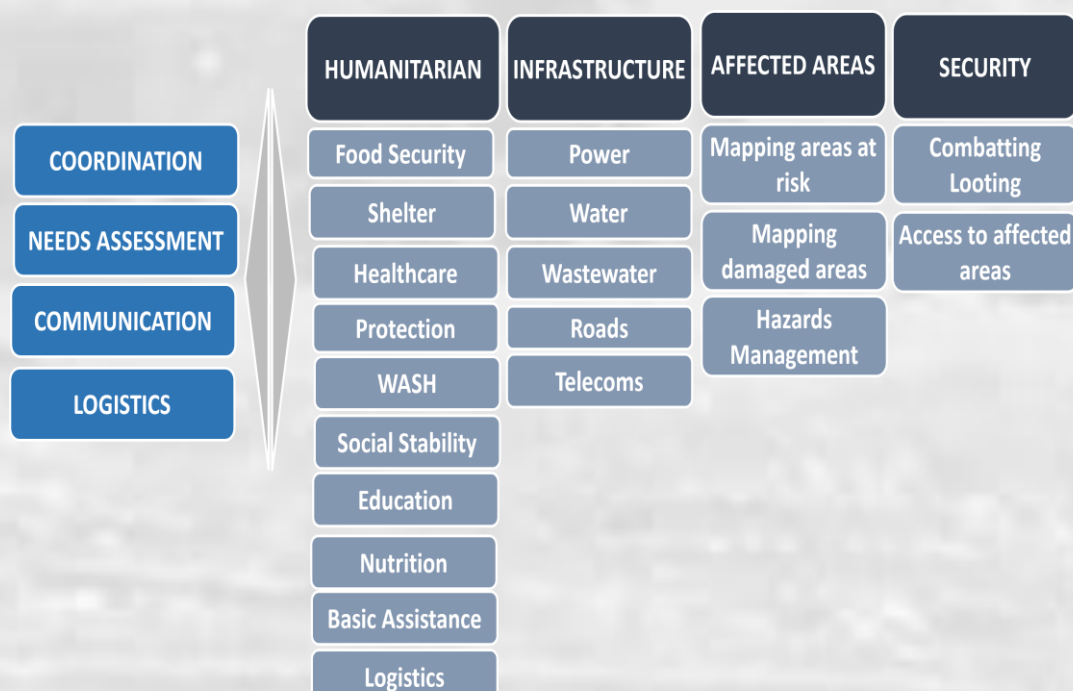


Distribution of Shelters per Governorate



NATIONAL PREPAREDNESS & RESPONSE PLAN

At the early beginnings of the aggressions, the Lebanese Government through the National DRR Committee to Coordinate Preparedness and Response, in accordance with the National Response Framework, identified the key focus areas of its national preparedness and response plan. This plan aims to mitigate the impact of hostilities in South Lebanon and establish preparedness measure based on potential scenarios.



RESPONSE OF OFFICIAL DEPARTMENTS (FOR THE LAST 48 HOURS):

Lebanese Civil Defense

217 Missions	113 Firefighting	88 First Aid and Transport	10 Search and Rescue	6 Others
--------------	------------------	----------------------------	----------------------	----------

Beirut Fire Brigade

179 Missions	112 Aid Distribution to Shelters	36 Water Transport IDPs	4 Others	25 Water Transport	2 Firefighting
--------------	----------------------------------	-------------------------	----------	--------------------	----------------

Lebanese Red Cross

816 Ambulance Missions	49 Psychiatric First-Aid Sessions	1 Volunteer at the Ministry of Education and Higher Education	418 Personal Hygiene Kit	103 Transfusion of Blood Units	31 # People who Received Reproductive Health Service	1,069 Field Volunteer	69 Volunteer in the governorates' operations rooms
	23 # of people who participated in psychological first aid and psychosocial support sessions	12,785 Water Bottles	584 Blankets	261 Mattresses	1,638 Bread Bundles	197 Food Parcels	209,156 Ready to Eat Meals
	107 # Children who Participated in Child Friendly Spaces	2 Transportation of Medical Teams and Equipment	31 Remote psychological individual sessions with displaced chronic patients	- Physical Rehabilitation Services	9 Preparation of Child Friendly Spaces	3 Evacuation Plans put in Place in Shelters	2 Dignity Kits
	510 # of people who participated in health promotion and psychosocial support sessions73586	39 Psychological First Aid Sessions and Psychosocial Support	- Kitchen Kits	2 Health Promotion and Psychosocial Support Sessions	552 Medical Service	452 Medical Consultations	6 Visit Mobile Medical Clinics
	2 Volunteer in the Surveillance Unit at the Ministry of Public Health	- Hygiene Sessions	1,290 # of people who participated in Armed Conflict awareness sessions and training on DRR preparedness	- Children Kits	6 Volunteers in DRM	- Volunteers in MOIM	443 Vaccinating children

2024 Public Health Emergency Operation Center (PHEOC)

17 NOVEMBER 2024

Health Services Hotlines | 1214 - 1787

SINCE THE BEGINNING OF THE AGGRESSION

3 516 Martyrs 14 929 Wounded

17 NOV 2024

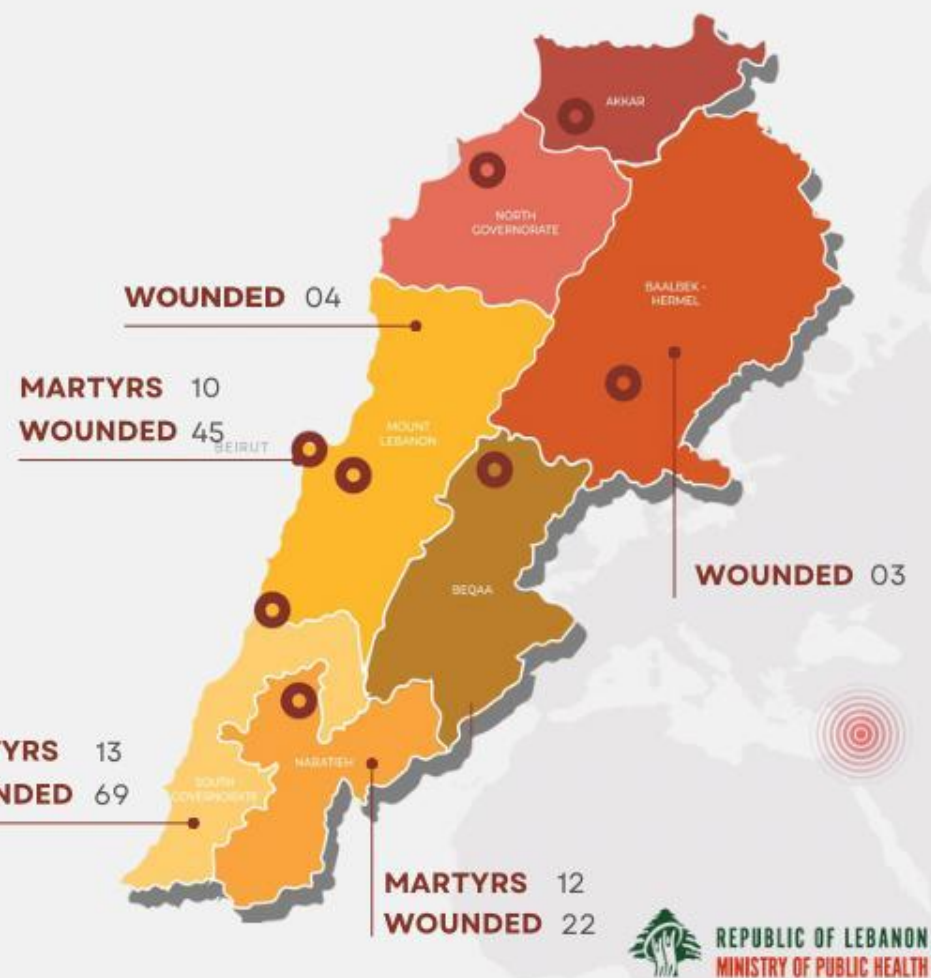
35 Martyrs

143 Wounded

Martyrs 671	Martyrs 2 463	Martyrs 231
Wounded 2 646	Wounded 11 631	Wounded 1 330

HEALTH SECTOR

Martyrs	Wounded	Vehicles	Medical & ambulatory centers	Hospitals	No of attacks on Hospitals	No of attacks on EMS
212	317	249	93	40	66	225



EXPECTED HUMANITARIAN AND RELIEF AID TO LEBANON

Donor	Date of Arrival	Type of Aid
Saudi Arabia x8	30/10/2024 – 13/11/2024	Humanitarian Aid
Saudi Arabia x4	10/11/2024 – 30/11/2024	Humanitarian Aid to the HRC
UAE	16-18/11/2024	Humanitarian Aid
Brazil	19/11/2024	Humanitarian Aid to the MoPH
France	19/11/2024	Humanitarian Aid

[Download here the list of countries that have provided international aid to Lebanon since September 25, 2024](#)

COORDINATION AND INTERNATIONAL SUPPORT THROUGH THE UNITED NATIONS ORGANIZATIONS:

A summary of the humanitarian assistance provided to IDPs in various Lebanese regions within the joint response plan with the United Nations organizations in Lebanon according to information received as of **November 18, 2024**, from the following organizations:

UNICEF	UNHCR	UNDP	WFP	WHO	OCHA	IOM	UNRWA	UNFPA	UNHABITAT
Sites		1173			Partners			140	
Sector		Total							
Basic Assistance	Pillows, blankets, mattresses, clothes, light bulbs, cooking utensils, vacuums, etc.	539,185 items were distributed in collective shelters benefiting 235,833 individuals							
Child Protection	Awareness sessions with parents	69,918							
Food Security	Individuals received food assistance in the form of bread, ready-to-eat meals, food rations, hot meals	6 million meals, including 5.7 million hot meals and 1,100,000 cold meals in 1,028 centers 335,908 bread packs in 510 centers 244,966 ready-to-eat meals in 497 centers 218,365 food parcels for 93,910 individuals in 319 centers and 124,365 out-of-center parcels 240,459 individuals benefited from emergency cash assistance under the National Program for the Poorest Families							
GBV	Personal Care Kit for Women and Girls	68,281							
Health	Medications, health consultations, etc.	93,826							
Nutrition	Nutrient supplements for children and women	54,964							
Protection	Community centers open and support to individuals and communities related to protection services	24,145							
Shelter	Shelters surveyed and rehabilitated	584 shelters were surveyed / Rehabilitation is ongoing in 167 shelters Rehabilitation has been completed in 128 shelters							
WASH	Drinking water, WaSh in-kind Kits, Access to clean water (Drinking water and for domestic use), wastewater desludging, Installation of new portable Showers and Toilets.	1,059 centers reached within the sector 125,530 kits, including 93,216 hygiene kits. 1,25,381 liters of drinking water 42,097 cubic meters of water for domestic use 1,506 cubic meters of wastewater discharged 498 new portable showers installed and 98 additional toilets and 169 water heaters.							
Education	Affected children reached with student kits and/or learning materials, non-specialized PSS and SEL activities, School kits and/or learning materials	15,991							
Social Stability and Livelihood	Equipment	516							